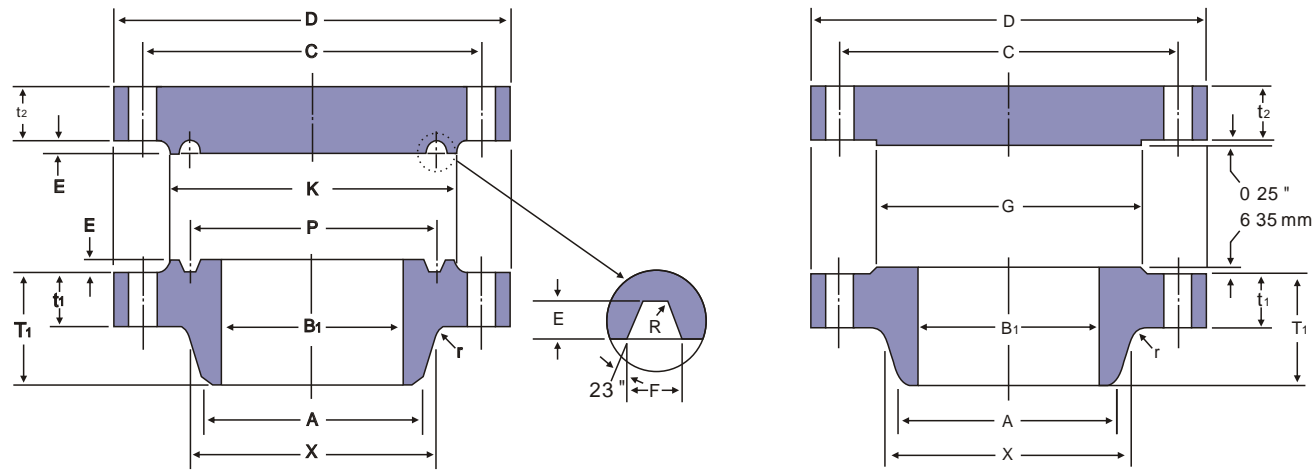
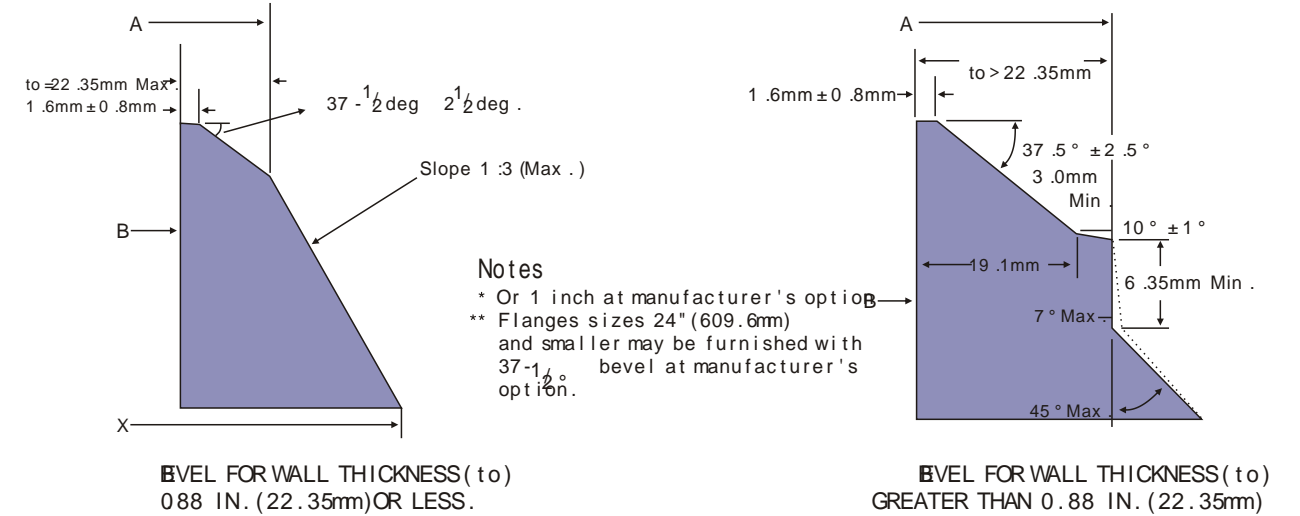


ANSI B16.47 SERIES A



ANSI B16.47 SERIES A
WELDING-ENDS FOR WELDING-NECK FLANGES



Unit :mm

Nominal Pipe Size	Outside Diam .	Diam . at Base of Hub	O .D .of Raised Face	Thickness		BORE		Length Thru Hub	Diam . of Hub at Bevel	Radius of Fillet
				Welding Neck	Blind	Wall Thickness				
						9.5mm	12.7mm			
D	X	G	t1	t2	B1		T1	A	r	
12	559	400.1	381.0	66.5	66.5	304.8	298.5	155.4	323.9	11.2
14	603	431.8	412.8	69.9	69.9	336.6	330.2	165.1	355.6	11.2
16	686	495.3	469.9	76.2	76.2	387.4	381.0	177.8	406.4	11.2
18	743	546.1	533.4	82.6	82.6	438.2	431.8	184.2	457.2	11.2
20	813	609.6	584.2	88.9	88.9	489.0	482.6	190.5	508.0	11.2
22	870	666.8	641.4	95.3	95.3	539.8	533.4	196.9	558.8	11.2
24	940	717.6	692.2	101.6	101.6	590.6	584.2	203.2	609.6	11.2
26	1016	747.8	749.3	108.0	125.5	641.4	635.0	222.3	671.6	12.7
28	1073	803.1	800.1	111.3	131.8	692.2	685.8	235.0	723.9	12.7
30	1130	862.1	857.3	114.3	139.7	743.0	736.6	247.7	774.7	12.7
32	1194	917.4	914.4	117.3	147.6	793.8	787.4	260.4	825.5	12.7
34	1245	973.1	965.2	120.7	153.9	844.6	838.2	269.7	877.8	14.2
36	1314	1031.7	1022.4	124.0	162.1	895.4	889.0	282.4	928.6	14.2
38	1270	1022.4	1054.1	152.4	155.4	946.2	939.8	254.0		14.2
40	1321	1073.2	1111.3	158.8	162.1	997.0	990.6	263.7		14.2
42	1403	1127.3	1168.4	168.1	171.5	1047.8	1041.4	279.4		14.2
44	1454	1181.1	1225.6	173.0	177.8	1098.6	1092.2	289.1		14.2
46	1511	1234.9	1276.4	179.3	185.7	1149.4	1143.0	300.0		14.2
48	1594	1289.1	1333.5	189.0	195.3	1200.2	1193.8	316.0		14.2
50	1670	1343.2	1384.3	196.9	203.2	1251.0	1244.6	328.7		14.2
52	1721	1394.0	1435.1	203.2	209.6	1301.8	1295.4	336.6		14.2
54	1778	1447.8	1492.3	209.6	217.4	1352.6	1346.2	349.3		14.2
56	1854	1501.6	1543.1	217.4	225.6	1403.4	1397.0	362.0		15.7
58	1905	1552.4	1600.2	222.3	231.6	1454.2	1447.8	369.8		15.7
60	1994	1609.9	1657.4	233.4	242.8	1505.0	1498.6	388.9		17.5

Notes

- For the 'Bore' (B1) other than Wall thickness 0.375" (9.5mm) and 0.500" (12.7mm), refer to page 60.
- Class 600 flanges will be furnished with 0.25" (6.35mm) raised face, which is included in "Thickness" (t) and "Length through Hub" (T1)
- Dimensional tolerance are in accordance with ANSI B16.5

Unit :mm

Nominal Pipe Size	DRILLING			Pitch Diam .	GROOVE DIMENSIONS			Diam . of Raised Face	Ring and Groove Number
	Bolt Circle Diam .	Number of Holes	Diam . of Holes		Width	Depth	Radius		
12	489.0	20	35.1	381.0	11.9	7.9	0.8	412.8	R57
14	527.1	20	38.1	419.1	11.9	7.9	0.8	457.2	R61
16	603.3	20	41.1	469.9	11.9	7.9	0.8	508.0	R65
18	654.1	20	44.5	533.4	11.9	7.9	0.8	574.5	R69
20	723.9	24	44.5	584.2	13.5	9.5	1.5	635.0	R73
22	777.7	24	47.8	635.0	15.1	11.1	1.5	685.8	R81
24	838.2	24	50.8	692.2	16.7	11.1	1.5	749.3	R77
26	914.4	28	50.8	749.3	19.8	12.7	1.5	809.8	R93
28	965.2	28	53.8	800.1	19.8	12.7	1.5	860.6	R94
30	1022.4	28	53.8	857.3	19.8	12.7	1.5	917.4	R95
32	1079.5	28	60.5	914.4	23.0	14.3	1.5	984.3	R96
34	1130.3	28	60.5	965.2	23.0	14.3	1.5	1035.1	R97
36	1193.8	28	66.5	1022.4	23.0	14.3	1.5	1092.2	R98
38	1162.1	28	60.5						
40	1212.9	32	60.5						
42	1282.7	28	66.5						
44	1333.5	32	66.5						
46	1390.7	32	66.5						
48	1460.5	32	73.2						
50	1524.0	28	79.2						
52	1574.8	32	79.2						
54	1632.0	32	79.2						
56	1695.5	32	85.9						
58	1746.3	32	85.9						
60	1822.5	28	91.9						

- Maximum Pressure Rating for raised face flanges is 1480 psi (102.1BARS) at atmospheric temperature.
- Flange dimensions of size 12" (304.8mm) through 24" (609.6mm) flanges except 22" (558.8mm) are in accordance with ANSI B 16.5.
- For sizes 26" (660.4mm) and larger, Diameter of Hub at Bevel (A) are in accordance with ASME Boiler and pressure vessel code.