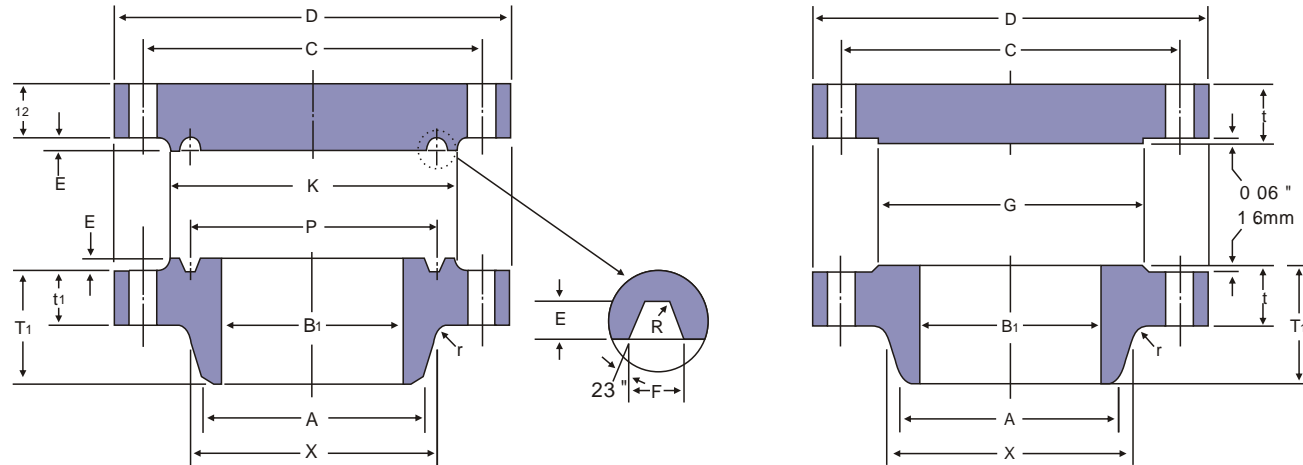
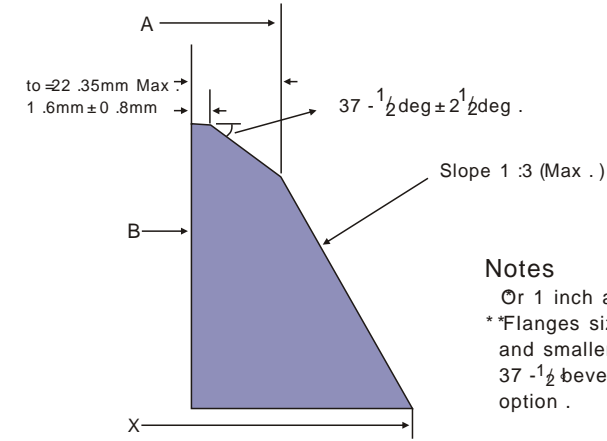


ANSI B16.47 SERIES A

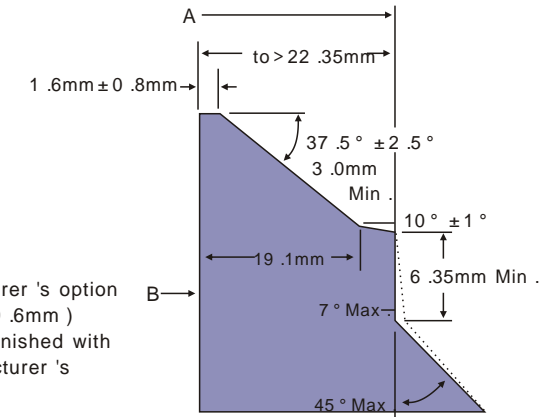


ANSI B16.47 SERIES A
WELDING-ENDS FOR WELDING-NECK FLANGES



Notes
Or 1 inch at manufacturer's option
*Flanges sizes 24" (609.6mm) and smaller may be furnished with 37-1/2° bevel at manufacturer's option.

BEVEL FOR WALL THICKNESS (to)
0.88 IN. (22.35mm) OR LESS.



BEVEL FOR WALL THICKNESS (to)
GREATER THAN 0.88 IN. (22.35mm)

Unit :mm

Nominal Pipe Size	Outside Diam .	O .D. of Raised Face	Diam . at Base of Hub	Thickness		BORE		Length Thru Hub	Diam . of Hub at Bevel	Radius of Fillet
				Welding Neck	Blind	Wall Thickness				
						9.5mm	12.7mm			
D	G	X	t1	t2	B1		T1	A	r	
12	521	381.0	374.7	50.8	50.8	304.8	298.5	130.0	323.9	9.7
14	584	412.8	425.5	53.8	53.8	336.6	330.2	142.7	355.6	9.7
16	648	469.9	482.6	57.2	57.2	387.4	381.0	146.1	406.4	9.7
18	711	533.4	533.4	60.5	60.5	468.2	431.8	158.8	457.2	9.7
20	775	584.2	587.2	63.5	63.5	489.0	482.6	162.1	508.0	9.7
22	838	641.4	641.4	66.5	66.5	539.8	533.4	165.1	558.8	9.7
24	914	692.2	701.5	69.9	69.9	590.6	584.2	168.1	609.6	9.7
26	972	749.3	720.9	79.2	84.1	641.4	635.0	184.2	666.8	9.7
28	1035	800.1	774.7	85.9	90.4	692.2	685.8	196.9	717.6	11.2
30	1092	857.3	827.0	91.9	95.3	743.0	736.6	209.6	768.4	11.2
32	1149	914.4	881.1	98.6	100.1	793.8	787.4	222.3	819.2	11.2
34	1207	965.2	936.8	101.6	104.6	844.6	838.2	231.6	871.7	12.7
36	1270	1022.4	990.6	104.6	111.3	895.4	889.0	241.3	922.5	12.7
38	1168	1028.7	993.6	108.0	108.0	946.2	939.8	180.8		12.7
40	1238	1085.9	1047.8	114.3	114.3	997.0	990.6	193.5		12.7
42	1289	1136.7	1098.6	119.1	119.1	1047.8	1041.4	200.2	To be specified by Purchaser	12.7
44	1353	1193.8	1149.4	124.0	124.0	1198.6	1092.2	206.2		12.7
46	1416	1244.6	1203.5	128.5	128.5	1149.4	1143.0	215.9		12.7
48	1467	1301.8	1254.3	133.4	133.4	1200.2	1193.8	223.8		12.7
50	1530	1358.9	1305.1	139.7	139.7	1251.0	1244.6	231.6		12.7
52	1581	1409.7	1355.9	144.5	144.5	1301.8	1295.4	238.3		12.7
54	1657	1466.9	1409.7	152.4	152.4	1352.6	1346.2	252.5		12.7
56	1708	1517.7	1463.5	153.9	153.9	1403.4	1397.0	260.4		12.7
58	1759	1574.8	1514.3	158.8	158.8	1454.2	1447.8	266.7		12.7
60	1810	1625.6	1565.1	163.6	163.6	1505.0	1498.6	273.1		12.7

Notes

- (1) For the 'Bore' (B1) other than Wall thickness 0.375" (9.5mm) and 0.500" (12.7mm), refer to page 60.
- (2) Class 150 flanges will be furnished with 0.06" (1.6mm) raised face, which is included in "Thickness" (t) and "Length through Hub" (T1)
- (3) Dimensional tolerance are in accordance with ANSI B16.5

Unit :mm

Nominal Pipe Size	DRILLING			Pitch Diam .	GROOVE DIMENSIONS			Diam . of Raised Face	Ring and Groove Number
	Bolt Circle Diam .	Number of Holes	Diam . of Holes		Width	Depth	Radius		
12	450.9	16	31.8	381.0	11.9	7.9	0.8	412.8	R57
14	514.4	20	31.8	419.1	11.9	7.9	0.8	457.2	R61
16	571.5	20	35.1	469.9	11.9	7.9	0.8	508.0	R65
18	628.7	24	35.1	533.4	11.9	7.9	0.8	574.5	R69
20	685.8	24	35.1	584.2	13.5	9.5	1.5	635.0	R73
22	743.0	24	41.1	635.0	15.1	11.1	1.5	685.8	R81
24	812.8	24	41.1	692.2	16.7	11.1	1.5	749.3	R77
26	876.3	28	44.5	749.3	19.8	12.7	1.5	809.8	R93
28	939.8	28	44.5	800.1	19.8	12.7	1.5	860.6	R94
30	997.0	28	47.8	857.3	19.8	12.7	1.5	917.4	R95
32	1054.1	28	50.8	914.4	23.0	14.3	1.5	984.3	R96
34	1104.9	28	50.8	965.2	23.0	14.3	1.5	1035.1	R97
36	1168.4	32	53.8	1022.4	23.0	14.3	1.5	1092.2	R98
38	1092.2	32	41.1						
40	1155.7	32	44.5						
42	1206.5	32	44.5						
44	1263.7	32	47.8						
46	1320.8	28	50.8						
48	1371.6	32	50.8						
50	1428.8	32	53.8						
52	1479.6	32	53.8						
54	1549.4	28	60.5						
56	1600.2	28	60.5						
58	1651.0	32	60.5						
60	1701.8	32	60.5						

(4) Maximum Pressure Rating for raised face flanges is 740 psi (51 BARS) at atmospheric temperature .

(5) Flange dimensions of size 12" (304.8mm) through 24" (609.6mm) flanges except 22" (558.8mm) are in accordance with ANSI B 16.5 .

(6) For sizes 26" (660.4mm) and larger, Diameter of Hub at Bevel (A) are in accordance with ASME Boiler and pressure vessel code.