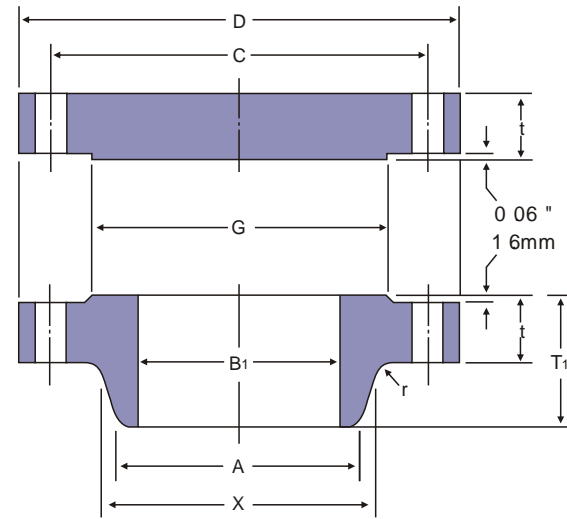




ANSI B16.47 SERIES A



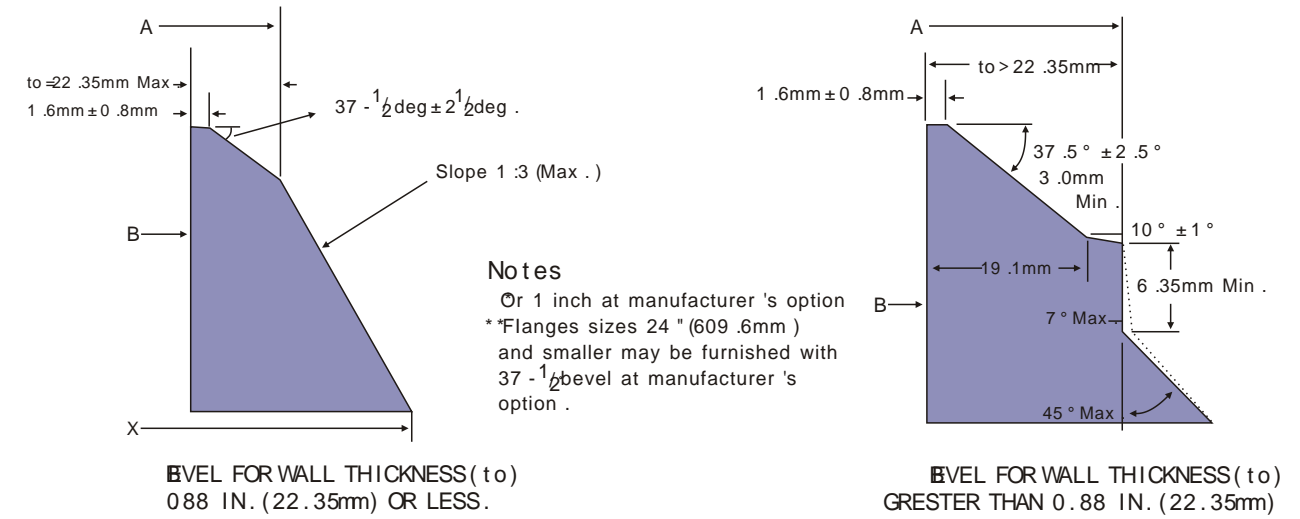
Unit :mm

Nominal Pipe Size	Outside Diam .	O .D .of Raised Face	Diam . at Base of Hub	Thickness	BORE	
					Wall Thickness	
					9 .5mm	12 .7mm
	D	G	X	t	B1	
12	483	381.0	365.3	31.8	304.8	298.5
14	533	412.8	400.1	35.1	336.6	330.2
16	597	469.9	457.2	36.6	387.4	381.0
18	635	533.4	505.0	39.6	438.2	431.8
20	699	584.2	558.8	42.9	489.0	482.6
22	749	641.4	609.6	46.0	539.8	533.4
24	813	692.2	663.4	47.8	590.6	584.2
26	870	749.3	676.1	68.3	641.4	635.0
28	927	800.1	726.9	71.4	692.2	685.8
30	984	857.3	781.1	74.7	743.0	736.6
32	1060	914.4	831.9	80.8	793.8	787.4
34	1111	965.2	882.7	82.6	844.6	838.2
36	1168	1022.4	933.5	90.4	895.4	889.0
38	1238	1073.2	990.6	87.4	946.2	939.8
40	1289	1124.0	1041.4	90.4	997.0	990.6
42	1346	1193.8	1092.2	96.8	1047.8	1041.4
44	1403	1244.6	1143.0	101.6	1098.6	1092.2
46	1454	1295.4	1196.8	103.1	1149.4	1143.0
48	1511	1358.9	1247.6	108.0	1200.2	1193.8
50	1568	1409.7	1301.8	111.3	1251.0	1244.6
52	1626	1460.5	1352.6	115.8	1301.8	1295.4
54	1683	1511.3	1403.4	120.7	1352.6	1346.2
56	1746	1574.8	1457.5	124.0	1403.4	1397.0
58	1803	1625.6	1508.3	128.5	1454.2	1447.8
60	1854	1676.4	1559.1	131.8	1505.0	1498.6

Notes

- (1) For the 'Bore' (B1) other than Wall thickness 0.375" (9.5mm) and 0.500" (12.7mm), refer to page 60.
- (2) Class 150 flanges will be furnished with 0.06" (1.6mm) raised face, which is included in "Thickness" (t) and "Length through Hub" (T1)
- (3) Dimensional tolerance are in accordance with ANSI B16.5

ANSI B16.47 SERIES A



Notes

- Or 1 inch at manufacturer's option
- \*Flanges sizes 24" (609.6mm) and smaller may be furnished with 37-1/2° bevel at manufacturer's option.

Unit :mm

Nominal Pipe Size	Length thru Hub	Diam . of Hub Bevel	Radius of Fillet	DRILLING		
				Bolt Circle Diam .	Number of Holes	Diam . of Holes
12	114.3	323.9	9.7	431.8	12	25.4
14	127.0	355.6	9.7	476.3	12	28.4
16	127.0	406.4	9.7	539.8	16	28.4
18	139.7	457.2	9.7	577.9	16	31.8
20	144.5	508.0	9.7	635.0	20	31.8
22	149.4	558.0	9.7	692.2	20	35.1
24	152.4	609.6	9.7	749.3	20	35.1
26	120.7	To be specified by purchaser	9.7	806.5	24	35.1
28	125.5		11.2	863.6	28	35.1
30	136.7		11.2	914.4	28	35.1
32	144.5		11.2	977.9	28	41.1
34	149.4		12.7	1028.7	32	41.1
36	157.0		12.7	1085.9	32	41.1
38	157.2		12.7	1149.4	32	41.1
40	163.6		12.7	1200.2	36	41.1
42	171.5		12.7	1257.3	36	41.1
44	177.8		12.7	1314.5	40	41.1
46	185.7		12.7	1365.3	40	41.1
48	192.0		12.7	1422.4	44	41.1
50	203.2		12.7	1479.6	44	47.8
52	209.6		12.7	1536.7	44	47.8
54	215.9	12.7	1593.9	44	47.8	
56	228.6	12.7	1651.0	48	47.8	
58	235.0	12.7	1708.2	48	47.8	
60	239.8	12.7	1759.0	52	47.8	

- (4) Maximum Pressure Rating for raised face flanges is 285 psi (19.5BARS) at atmospheric temperature.
- (5) Flange dimensions of size 12" (304.8mm) through 24" (609.6mm) flanges except 22" (558.8mm) are in accordance with ANSI B 16.5.