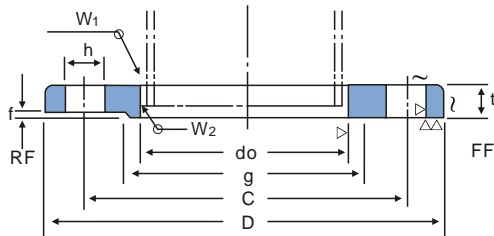


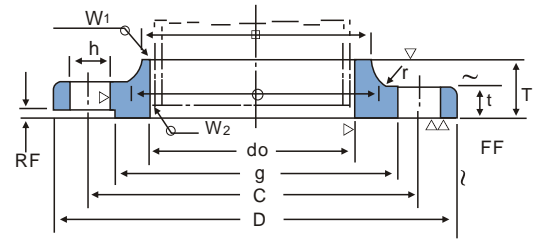


5K

NOMINAL SIZE 10-400mm



NOMINAL SIZE 450-1000mm



Unit :mm

Nominal Bore of Flange	Outside Dia .of Appli - Cabel pipe	Inside Dia .of Flange do	Outside Dia .of Flange D	Sectional Dimensions of Flange							Dia .of Bolt				Welding		Weigh (kg)
				t	T	Dia .of Hub		Radius r	Raised Face f	Dia .of Raised Face g	Dia .of Bolt Circle c	Number of Bolt Holes	Hole Dia . h	Nominal Bolt Size	W1	W2	
						a	b										
(10)	17.3	17.8	75	9	-	-	-	-	1	39	55	4	12	M10	5	2.5	0.27
15	21.7	22.2	80	9	-	-	-	-	1	44	60	4	12	M10	5	3	0.30
(20)	27.2	27.7	85	10	-	-	-	-	1	49	65	4	12	M10	5	3	0.37
25	34.0	34.5	95	10	-	-	-	-	1	59	75	4	12	M10	5	3	0.45
(32)	42.7	43.2	115	12	-	-	-	-	2	70	90	4	15	M12	6	3	0.78
40	48.6	49.1	120	12	-	-	-	-	2	75	95	4	15	M12	6	3	0.83
50	60.5	61.1	130	14	-	-	-	-	2	85	105	4	15	M12	6	3	1.07
65	76.3	77.1	155	14	-	-	-	-	2	110	130	4	15	M12	6	4	1.49
80	89.1	90.0	180	14	-	-	-	-	2	121	145	4	19	M16	6	4	1.99
(90)	101.6	102.6	190	14	-	-	-	-	2	131	155	4	19	M16	6	4	2.09
100	114.3	115.4	200	16	-	-	-	-	2	141	165	8	19	M16	7	4	2.39
125	139.8	141.2	235	16	-	-	-	-	2	176	200	8	19	M16	7	4	3.23
150	165.2	166.6	265	18	-	-	-	-	2	206	230	8	19	M16	7	5	4.41
(175)	190.7	192.1	300	18	-	-	-	-	2	232	260	8	23	M20	7.5	5	5.51
200	216.3	218.0	320	20	-	-	-	-	2	252	280	8	23	M20	8.5	6	6.33
(225)	241.8	243.7	345	20	-	-	-	-	2	277	305	12	23	M20	9	6	6.64
250	267.4	269.5	385	22	-	-	-	-	2	317	345	12	23	M20	10	6	9.45
300	318.5	321.0	430	22	-	-	-	-	3	360	390	12	23	M20	10	6	10.30
350	355.6	358.1	480	24	-	-	-	-	3	403	435	12	25	M22	12	7	14.00
400	406.4	409.0	540	24	-	-	-	-	3	463	495	16	25	M22	12	7	16.90
450	457.2	460.0	605	24	40	495	500	5	3	523	555	16	25	M22	12	7	24.80
500	508.0	511.0	655	24	40	546	552	5	3	573	605	20	25	M22	12	7	26.90
550	558.8	562.0	720	26	42	597	603	5	3	630	665	20	27	M24	12	7	34.10
600	609.6	613.0	770	26	44	648	654	5	3	680	715	20	27	M24	12	7	35.50
650	660.4	664.0	825	26	48	702	708	5	3	735	770	24	27	M24	12	7	42.80
700	711.2	715.0	875	26	48	751	758	5	3	785	820	24	27	M24	12	7	45.40
750	762.0	766.0	945	28	52	802	810	5	3	840	880	24	33	M30	12	7	57.40
800	812.8	817.0	995	28	52	854	862	5	3	890	930	24	33	M30	13	8	60.80
850	863.6	868.0	1045	28	54	904	912	5	3	940	980	24	33	M30	13	8	63.50
900	914.4	919.0	1095	30	56	956	964	5	3	990	1030	24	33	M30	13	8	75.30
1000	1016.0	1021.0	1195	32	60	1058	1066	5	3	1090	1130	28	33	M30	14	9	88.50
* (1100)	1117.6	1123	1305	32	-	-	-	-	3	1200	1240	28	33	M30			
*1200	1219.2	1225	1420	34	-	-	-	-	3	1305	1350	32	33	M30			
*1350	1371.6	-	1575	34	-	-	-	-	3	1460	1505	32	33	M30			
*1500	1524.0	-	1730	36	-	-	-	-	3	1615	1660	36	33	M30			

- (1) Flanges of parenthesized nominal diameter had letter not be used.
- (2) The facing of flanges shall conform to KS B1519(JIS B2202)1984.
- (3)Nominal diameter over 1000 is manufacturer's standard(*) .