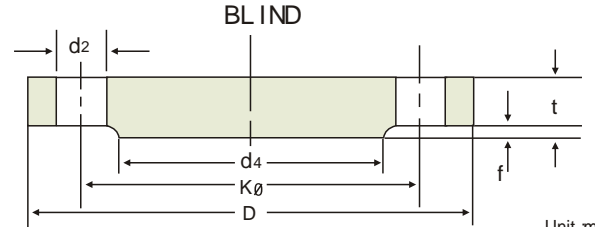
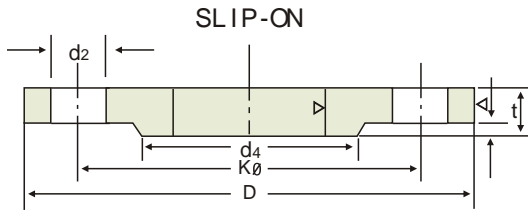


# 25 BAR

## DIN 2544 SLIP-ON FLANGES DIN 2527 BLIND FLANGES DIN 2634 WELDING NECK FLANGES



Unit mm

Bore		Common Dimension					Hub				Raised Face		Drilling			Approx Weight kg		
Nominal Bore	d <sub>1</sub>	D	Welding neck	Slip-on (No hub)	Blind	K <sub>0</sub>	T	d <sub>3</sub>	s	r	a <sub>2</sub>	d <sub>4</sub>	f	Number of Bolt	Dia. of Bolt	d <sub>2</sub>	DIN 2544	DIN 2634
10	14 17.2 )	90	16		16	60	35	25 28	1.8	4	6	40	2	4	M12 (1/2")	14	0.72	0.661
15	20 21.3 )	95	16	16	16	65	38	30 32	2.0	4	6	45	2	4	M12 (1/2")	14	0.81	0.746
20	25 26.9 )	105	18	18	18	75	40	38 40	2.3	4	6	58	2	4	M12 (1/2")	14	1.24	1.06
25	30 33.7 )	115	18	18	18	85	40	42 46	2.6	4	6	68	2	4	M12 (1/2")	14	1.38	1.29
32	38 42.4 )	140	18	18	18	100	42	52 56	2.6	6	6	78	2	4	M16 (5/8")	18	2.03	1.88
40	44.5 48.3 )	150	18	18	18	110	45	60 64	2.6	6	7	88	3	4	M16 (5/8")	18	2.35	2.34
50	57 60.3 )	165	20	20	20	125	48	72 75	2.9	6	8	102	3	4	M16 (5/8")	18	3.20	2.82
65	76.1 )	185	22	22	22	145	52	90	2.9	6	10	122	3	8	M16 (5/8")	18	4.29	3.74
80	88.9 )	200	24	24	24	160	58	105	3.2	8	12	138	3	8	M16 (5/8")	18	5.88	4.75
100	108 114.3 )	235	24	24	24	190	65	128 134	3.6	8	12	162	3	8	M20 (3/8")	23	7.54	6.52
125	133 139.7 )	270	26	26	26	220	68	155 162	4.0	8	12	188	3	8	M24 (7/8")	27	10.8	9.07
150	159 168.3 )	300	28	28	28	250	75	182 192	4.5	10	12	218	3	8	M24 (7/8")	27	14.5	11.8
200	216 219.1 )	360	30	30	30	310	80	240 244	6.3	10	16	278	3	12	M24 (7/8")	27	22.3	17.0
250	267 273 )	425	32	32	32	370	88	292 298	7.1	12	18	335	3	12	M27 (1")	30	33.5	24.4
300	318 323.9 )	485	34	34	34	430	92	345 352	8.0	12	18	395	4	16	M27 (1")	30	46.3	31.2
350	355.6 ) 368	555	38	38	38	490	100	398	8.0	12	20	450	4	16	M30 (1 1/8")	33	68.0	45.0
400	406.4 ) 419	620	40	40	40	550	110	452	8.8	12	20	505	4	16	M33 (1 1/4")	36	89.7	58.7
500	508 ) 521	730	44	44	44	660	125	558	10.0	12	20	615	4	20	M33 (1 1/4")	36	138.0	86.1
600	609.6 ) 622	845	46			770	125	660	11.0	12	20	720	5	20	M36 (1 3/8")	39		101.0
700	711.2 ) 720	960	46			875	125	760	12.5	12	20	820	5	24	M39 (1 1/2")	42		134.0
800	812.8 ) 820	1085	50			990	135	865	14.2	12	22	930	5	24	M45 (1 3/4")	48		183.0
900	914.4 ) 920	1185	54			1090	145	968	16.0	12	24	1030	5	28	M45 (1 3/4")	48		232.0
1000	1016 ) 1020	1320	58			1210	155	1070	17.5	16	24	1140	5	28	M52 (2")	56		302.0

**Notes**

\* Out side diameter of pipe complies with ISO recommendation R64 .