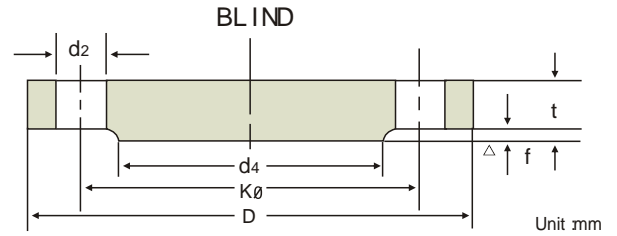
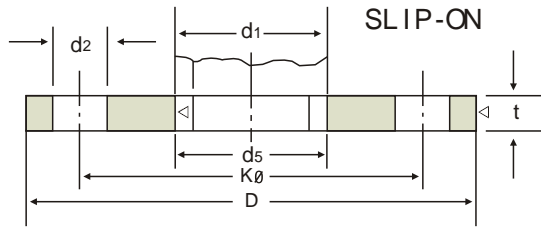


10 BAR DIN 2576 SLIP-ON FLANGES DIN 2527 BLIND FLANGES DIN 2632 WELDING NECK FLANGES



Unit mm

Nominal Bore	Bore		Common Dimension					Hub				Raised Face		Drilling			Approx Weight (kg)		
	d1	D	t	Welding neck	Slip-on (No hub)	Blind	Ko	T	d3	s	r	a	d4	f	Number of Bolt	Dia. of Bolt	d2	DIN 2576	DIN 2632
10	14 17.2	90	14	14	14	60	35	25 28	1.8	4	6	40	2	4	M12	(1/2")	14	0.163	0.580
15	20 21.3	95	14	14	14	65	35	30 32	2.0	4	6	45	2	4	M12	(1/2")	14	0.675	0.648
20	25 26.9	105	16	16	16	75	38	38 40	2.3	4	6	58	2	4	M12	(1/2")	14	0.947	0.952
25	30 33.7	115	16	16	16	85	38	42 45	2.6	4	6	68	2	4	M12	(1/2")	14	1.14	1.14
32	38 42.4	140	16	16	16	100	40	52 56	2.6	6	6	78	2	4	M16	(5/8")	18	1.66	1.69
40	44.5 48.3	150	16	16	18	110	42	60 64	2.6	6	7	88	3	4	M16	(5/8")	18	1.89	1.86
50	57 60.3	165	18	18	18	125	45	72 75	2.9	6	8	102	3	4	M16	(5/8")	18	2.51	2.53
65	76.1	185	18	18	18	145	45	90	2.9	6	10	122	3	4	M16	(5/8")	18	3.00	3.06
80	88.9	200	20	20	20	160	50	105	3.2	8	10	138	3	4	M16	(5/8")	18	3.79	3.70
100	108 114.3	220	20	20	20	180	52	125 131	3.6	8	12	158	3	8	M16	(5/8")	18	4.20	4.62
125	133 139.7	250	22	22	22	210	55	150 156	4.0	8	12	188	3	8	M16	(5/8")	18	5.71	6.30
150	159 168.3	285	22	22	22	240	55	175 184	4.5	10	12	212	3	8	M20	(3/4")	23	6.72	7.75
200	216 219.1	340	24	24	24	295	62	232 235	5.9	10	16	268	3	8	M20	(3/4")	23	9.50	11.3
250	267 273	395	26	26	26	350	68	285 292	6.3	12	16	320	3	12	M20	(3/4")	23	12.5	14.7
300	318 323.9	445	26	26	28	400	68	335 344	7.1	12	16	370	4	12	M20	(3/4")	23	14.4	17.6
350	355.6 368	505	26	28	30	460	68	385	7.1	12	16	430	4	16	M20	(3/4")	23	20.6	21.4
400	406.4 419	565	26	32	32	515	72	440	7.1	12	16	482	4	16	M24	(7/8")	27	27.9	26.1
500	508 521	670	28	38	34	620	75	542	7.1	12	16	585	4	20	M24	(7/8")	27	41.1	34.7
600	609.6 622	780	28			725	80	642	7.1	12	18	685	5	20	M27	(1")	30		
700	711.2 720	895	30			840	80	754	8.0	12	18	800	5	24	M27	(1")	30		
800	812.8 820	1015	32			950	90	850	8.0	12	18	905	5	24	M30	(1 1/8")	33		
900	914.4 920	1115	34			1050	95	950	10.0	12	20	1005	5	28	M30	(1 1/8")	33		
1000	1016 1020	1230	34			1160	95	1052	10.0	16	20	1110	5	28	M33	(1 1/4")	36		

Notes

* Out side diameter of pipe complies with ISO recommendation R64 .